

NOTES

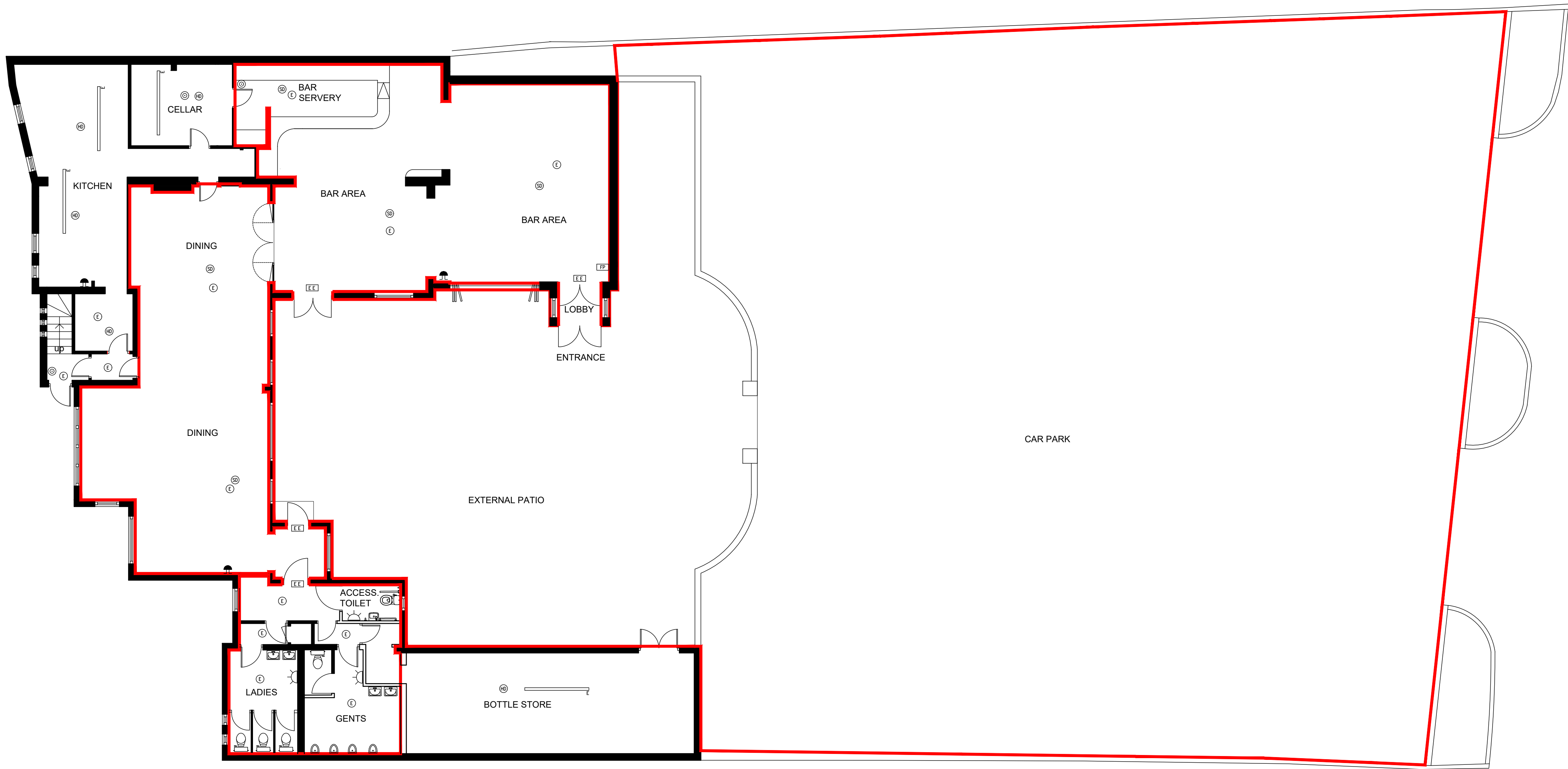
The designs and details on this drawing are copyright and must not be reproduced without the written permission of the designer.

Contractors are to check all sizes and dimensions before setting out any site or shopwork. Any errors or discrepancies to be reported to the designer.

Do not scale off this drawing.

REVISIONS

DATE



#### EMERGENCY LIGHTING

- ③ 3HR non- Maintained Emergency flush ceiling fitting. Electrician to supply & fit.
- EE New Emergency exit sign. Electrician to supply & fit.
- EE New external emergency light. Electrician to supply & fit.

**EMERGENCY LIGHTING**  
Fire Alarm to BS 5839 Part 1 & Emergency lighting to BS 5266 as Electrical drawing to be included to Building Control requirements

The proposed music system should be fully integrated with the alarm system so as to ensure that the alarm can be audible above all else.

#### FIRE ALARM

- ③ Manual call point supplied & fitted by electrician.
- ③ Smoke detector linked to fire alarm supplied & fitted by electrical contractor.
- ③ Heat detector linked to fire alarm supplied & fitted by electrical contractor.
- 🔊 Fire alarm sounder supplied & fitted by electrician
- 🔊 Vapour proof 3HR maintained emergency light. Electrician to supply & fit.
- 🔊 3HR emergency wall mounted bulkhead fitting supplied & fitted by electrical contractor.
- 🔊 Decorative emergency flush ceiling fitting supplied by client fitted by electrical contractor.
- 🔊 New fire alarm sounder and beacon supplied & fitted by electrical contractor.
- 🔊 New fire alarm panel, fire officers first port of call.

#### GENERAL NOTES

All fire doors to be fitted with automatic self-closing devices. Door frames to be rebated & fitted with suitable intumescent strips & smoke seals.

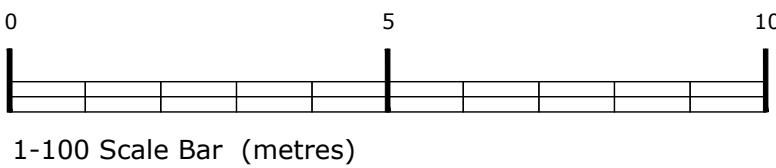
Vision panels within fire doors to have suitable F.R. rated glazing installed within intumescent beading.

All doors on escape routes to be either kept unlocked during opening hours or fitted with push-bar opening devices to BS EN 1125 1997 & fitted with 'PUSH BAR TO OPEN' signs

Any input/extract ventilation ductwork to have suitable fire dampers as per specialists details.

Red line indicates area of licensable activities /consumption of alcohol

INTERNAL LICENSED AREA - 289sq m



## LICENSING

DRAWING DESCRIPTION

LICENSING PLAN

GROUND FLOOR PLAN

JOB TITLE

THE CAUNTUN BECK

CAUNTUN

NEWARK NG23 6AB

CLIENT

THE CAUNTUN BECK

DRAWN BY	MB	SCALE	1:100 @ A1
DATE	JULY 2025	DRAWING NO.	2209/08
CHECKED		REVISION	

John Dixon & Associates Ltd,  
Unit 209,  
Chambers Business Centre.  
Chapel Road, Oldham.  
OL8 4QQ.

TEL : 0161 682 0964  
E-MAIL : info@johndixon.co.uk  
WEB : www.johndixon.co.uk

